


GALEON
YACHTS



520 FLY



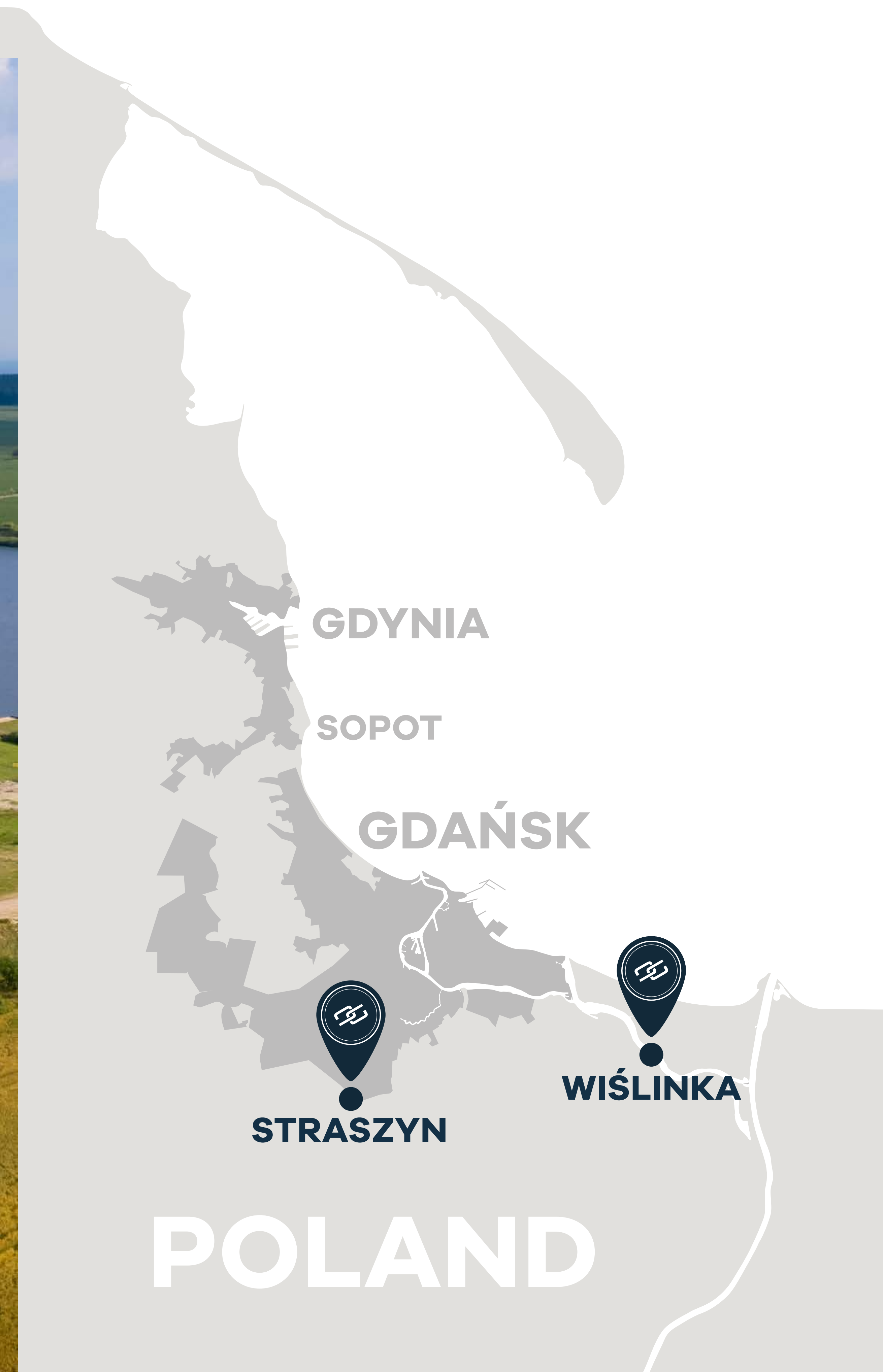


Inspired by Passion, Galeon Yachts creates more than vessels – we create icons of freedom and artistry on the sea. Every yacht is born from a deep dedication to excellence, where innovation meets timeless elegance and technology enhances every detail. Designed for those who value sophistication, comfort and individuality, our yachts reflect a lifestyle defined by grace and ambition. From the fluid lines of the exterior to the bespoke interiors crafted with care, each model is a statement of character and refinement. This philosophy guides us to continually push boundaries and set new standards. Step into our world, where journeys begin with vision, shaped by passion, and perfected in every detail.



Founded in 1982, Galeon Yachts has grown into a world-class shipyard, blending a proud heritage with a relentless drive for innovation. Still family-owned and operated in Poland, Galeon stands among Europe's premier luxury yacht builders, known globally. With decades of experience, we continually set new standards in yacht manufacturing. Our shipyard has delivered thousands of yachts to discerning owners worldwide.

We strongly believe, innovation is not just a goal - it's a mindset rooted in decades of yacht building tradition. From our private marina on the Baltic Sea to state-of-the-art production facilities, every detail is designed to support bold ideas and impeccable execution.





OUR AWARDS

Celebrated across the globe, Galeon Yachts has been honored with prestigious international awards that reflect our relentless pursuit of innovation, timeless design and unrivaled quality. These distinctions are more than achievements—they are milestones on our journey to continually shape the future of yachting with elegance, vision and uncompromising craftsmanship.



FLEET



FLYBRIDGE

360 400
440 480
520 560
620 640
680 800

SKYDECK

470
510
650
700

GTO

325
375
435

HARDTOP

410
450

SPORT CRUISER

405
425
485

EXPLORER

430

Our portfolio spans from 30 to 80 feet, offering something for every lifestyle: performance-driven GTO line, versatile Skydeck models, luxurious Flybridge yachts, and sleek Hardtops. Each is crafted with attention to detail, advanced technology, and award-winning design.

The Galeon fleet is more than a collection of yachts – it is an invitation to explore, to celebrate freedom, and to create unforgettable memories at sea.



FLYBRIDGE

Thoughtfully designed, the layout maximizes space to make life on board feel effortless, while clean geometric elements enhance its contemporary aesthetic. The expansive upper deck offers unforgettable experiences, whether you're cruising or at anchor. It's perfect for families — and ideal for entertaining.



520 FLY

The Galeon 520 FLY represents the next step in the evolution of Galeon's flybridge range. Built on the proven hull platform of the bestseller Galeon 500 FLY, the 520 FLY benefits from the exceptional performance, stability, and handling that made its predecessor one of the brand's most successful models worldwide.

The updated superstructure and refined layout introduce enhanced onboard ergonomics, improved space distribution, and a more contemporary interior atmosphere. Designed for owners seeking a balance between dynamic cruising and luxurious comfort, the 520 FLY delivers innovation while maintaining the trusted seaworthiness of the 500 series foundation.

The flybridge serves as a true outdoor living space, featuring generous seating areas arranged around a large sofa, creating an ideal zone for relaxation, dining, and socializing while underway or at anchor. It also includes an ergonomic helm station and a wet bar for effortless entertaining.







The bow area of the Galeon 520 FLY has been designed as a versatile relaxation zone. A spacious seating arrangement is complemented by an adjustable up-and-down table, allowing the space to transform effortlessly. When lowered and combined with additional mattresses, the area converts into one large sun-lounging surface - creating an expansive and comfortable leisure zone with panoramic views.

A signature Beach Mode feature introduces foldable side balconies that transform the aft cockpit into a wide, terrace-style space with direct continuity to the saloon. This innovative solution significantly expands usable social area and blurs the boundary between interior living and the sea.







Mediterranean Package - Amber Theme







Mediterranean Package - Ocean Theme



Below deck, the Galeon 520 FLY delivers an inviting residential atmosphere tailored for modern cruising lifestyles. Thoughtfully laid out to balance comfort, flexibility, and privacy, the accommodations are perfect for family cruising and hosting guests alike.



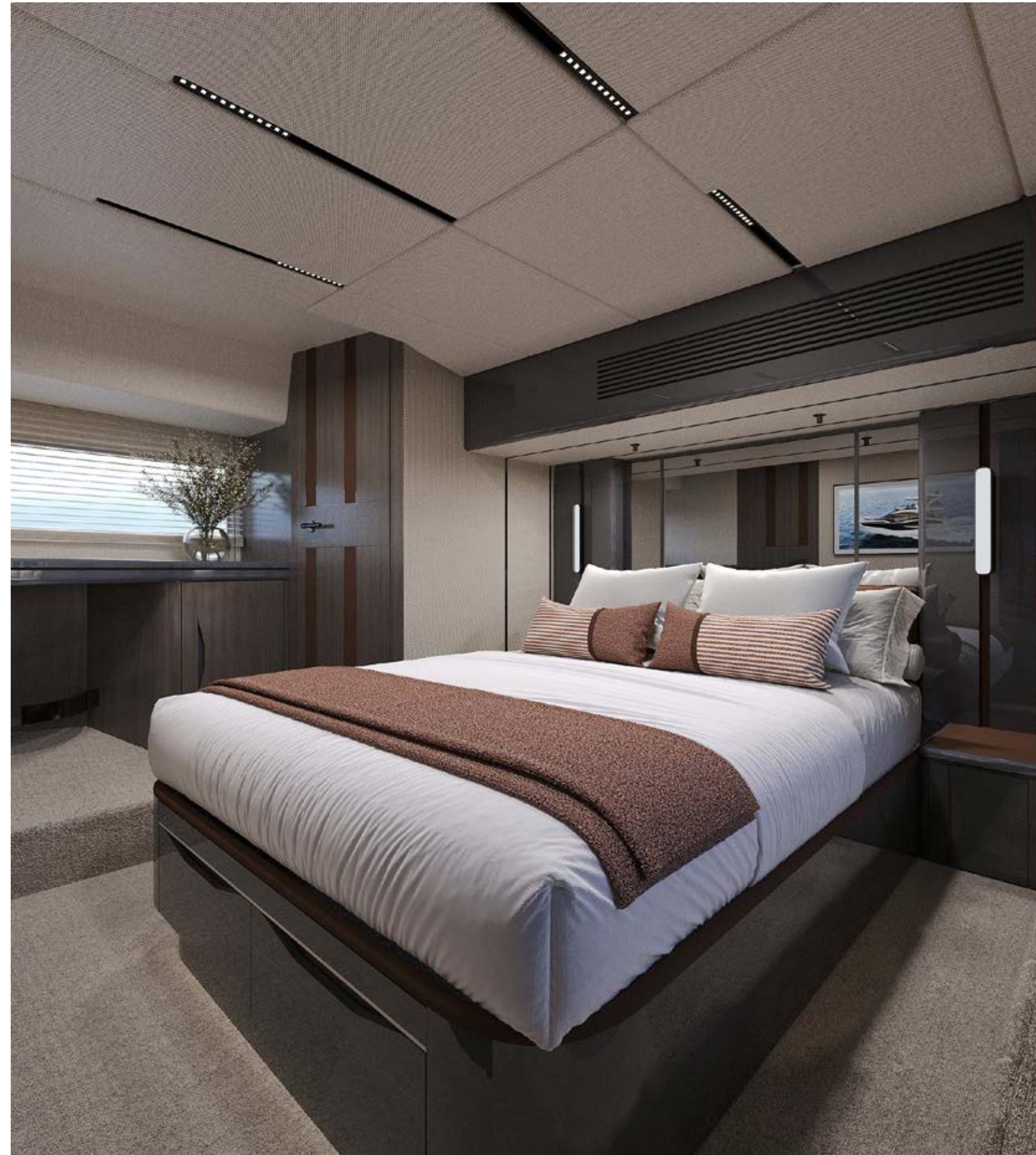
Mediterranean Package - Amber Theme



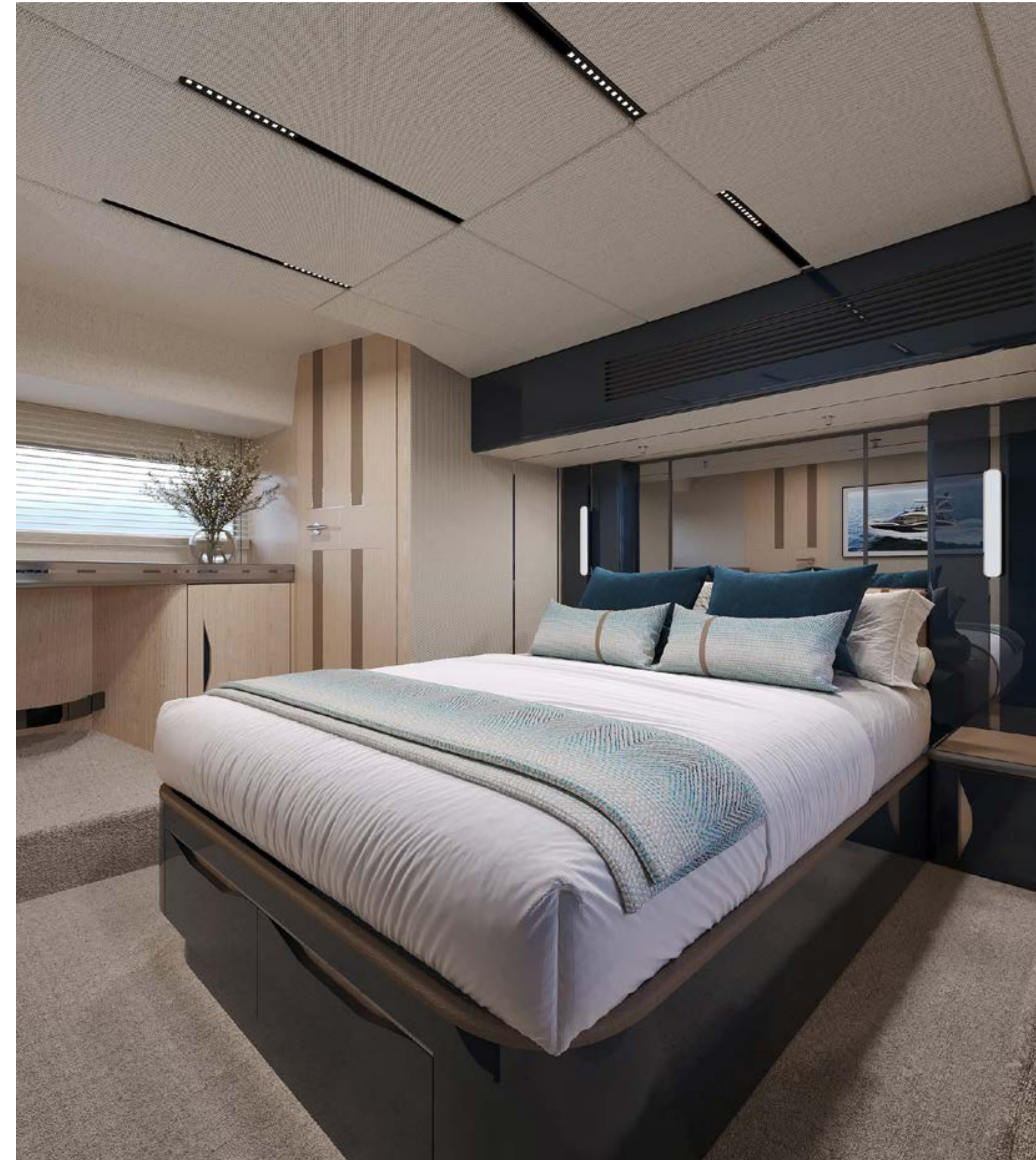
Mediterranean Package - Ivory Theme

The full-beam master suite amidships is a standout retreat, thoughtfully positioned to provide a separate private entrance that enhances owner privacy and serenity. Its ensuite bathroom and carefully considered layout create a true owner's sanctuary below deck. Forward, the VIP cabin welcomes guests with generous space and abundant natural light, while the third guest cabin features a smart sliding bed system, allowing the configuration to switch easily between a double berth and twin berths to suit changing needs. An optional skipper's cabin offers additional accommodation flexibility for longer passages or crew use.

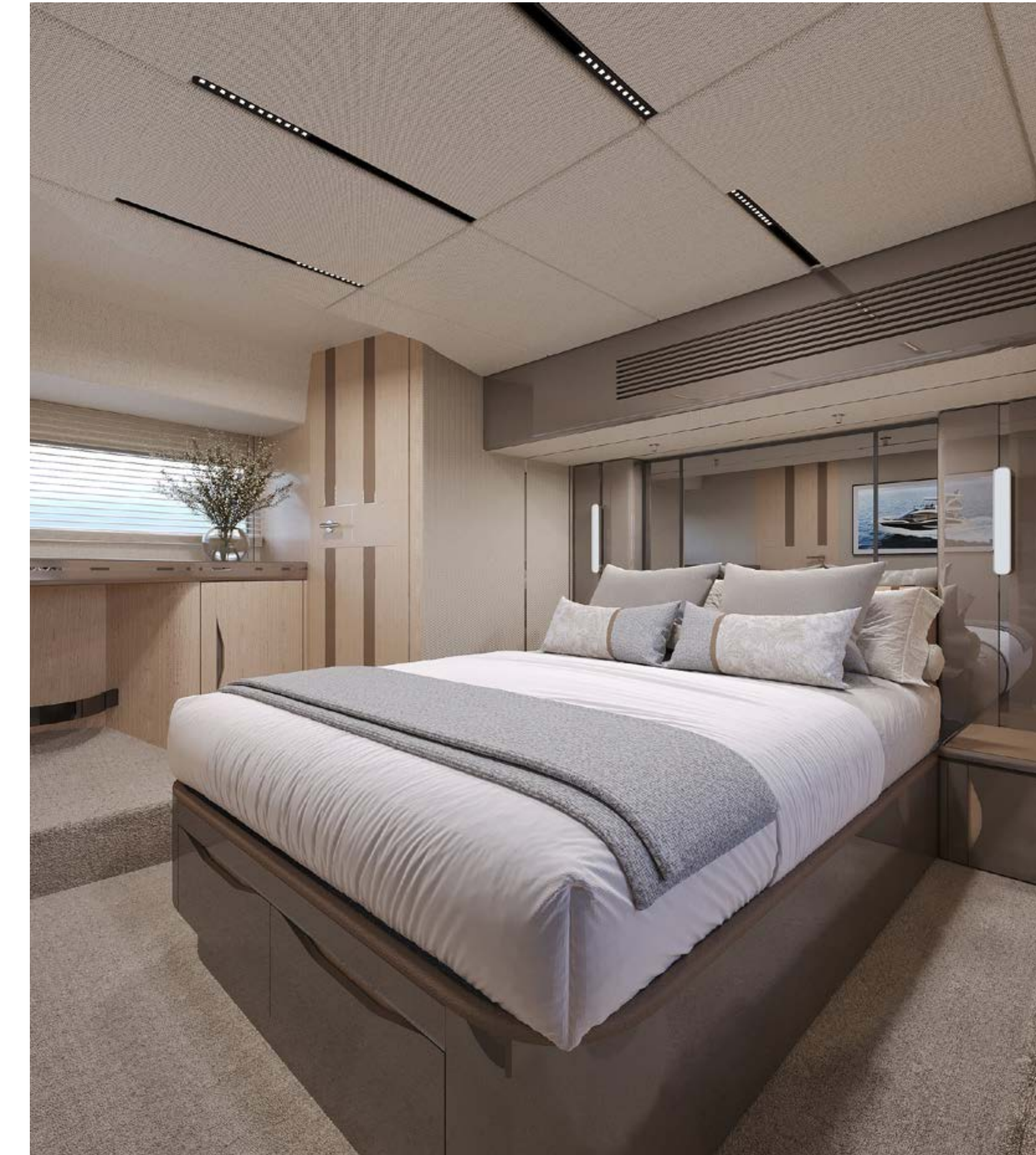
Amber



Ocean



Ivory



The interior design reflects relaxed Mediterranean elegance and has been developed in collaboration with Insitu & Partners as part of the exclusive Mediterranean interior package, offering five refined themes: Ivory, Pearl, Ocean, Amber, and Terra. Each palette brings its own distinct onboard atmosphere - from light, airy tones to deeper, natural hues - while unifying the interior spaces with high-gloss lacquer finishes, premium fabrics, and carefully integrated lighting that enhance both visual appeal and comfort.



The cockpit of the Galeon 520 FLY is designed to maximize social interaction and seamless sea access. A rotating sofa adds versatility, allowing the seating to be oriented toward the cockpit table for dining or turned outward to enjoy panoramic views of the water. The Beach Mode transformation further opens the space to sea level, creating a wide, terrace-style entertainment area. A hydraulic platform enhances boarding, launching water toys, and enjoying water activities, combining practical functionality with refined comfort for all onboard.





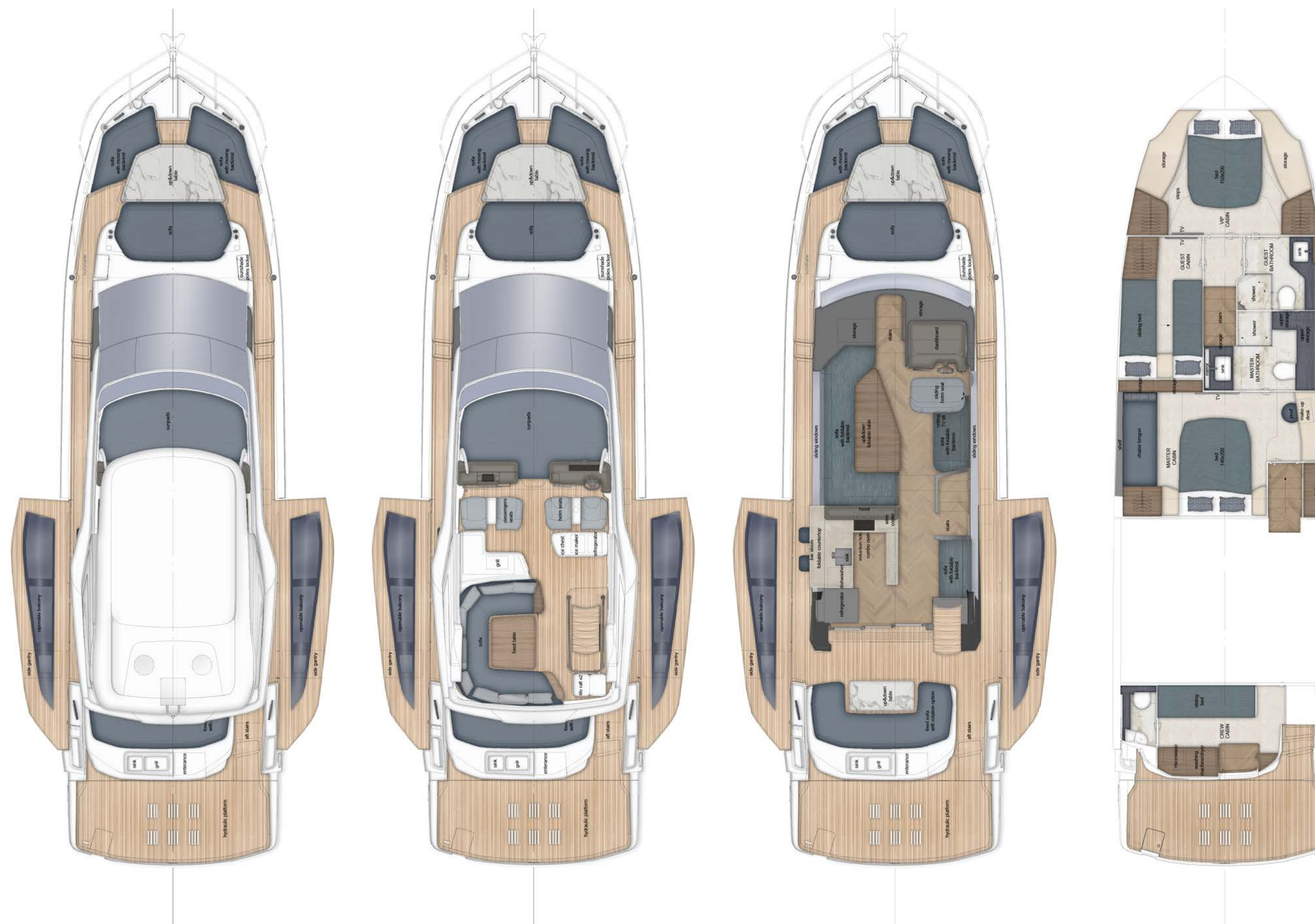
TECHNICAL DATA

Length of the hull	14,73	[m]
Length overall	17,2	[m]
Beam of the hull	4,61	[m]
Beam overall	6,70 ₄	[m]
Draft max ₁	0,902	[m]
Bridge clearance ₂	5,08 ₅	[m]
Height to transport	4,3 / 6,7 / 8,1 ₆	[m]
Fuel tank capacity	2x 900	[dm ³]
Water tank capacity	650	[dm ³]
Grey water tank	310	[dm ³]
Black water tank	250	[dm ³]
Mass of Light Craft Condition ₃	26198	[kg]
Maximum Load	2000	[kg]
Min. engine (-s) power	TBD	[kW/hp]
Max. engine (-s) power	2x 533/725	[kW/hp]
Crew limit	14	
Category	B	

₁ - without propellers
₂ - max. height from water line at draft min.
₃ - minimum mass with base engines
₄ - with Beach mode, balconies down
₅ - with removing the mast
₆ - road transport / marine transport / transport with mast installed
 TBD - to be determined



LAYOUTS



520 FLY



www.galeon.yachts