



# GALEON 640 FLY

PRICE: € 1.980.000 / VAT excl.

			
20,80 m	5,00 m	140 h	3350 L

Offering generous space and a layout that maximizes every inch, the 640 FLY impresses with its 20.8m hull, striking lines, and sweeping panoramic windows. Designed for those who expect more from life at sea, this exceptional motor yacht delivers the perfect setting for unforgettable moments with friends and family.

## OVERVIEW

Yacht type	<b>Motor Yacht</b>
Builder	<b>Galeon</b>
Year	<b>2023</b>

## DIMENSIONS

Lenght	<b>20,80 m</b>
Beam	<b>5,00 m</b>
Fuel/ Water	<b>3350 l / 800 l</b>

## MAIN MACHINERY

Engines	<b>2x VOLVO PENTA D13-1000 WITH DIGITAL 7" DISPLAY</b>
Engine Hours	<b>140 h</b>

## ACCOMODATION

Guests	<b>14</b>
Cabins	<b>4+1 (SKIPPER)</b>
Toilets	<b>3+1 (SKIPPER)</b>

# EQUIPMENT

## INTERIOR DESIGN

OAK - MATT PAINT

## MAIN EQUIPMENT

- \* COCKPIT SOFA WITH TRANSOM ENTRANCE TO THE STORAGE
- \* BEACH MODE PACKAGE - FOLDABLE AFT BALCONIES AND SLIDING OPENABLE AFT SIDE WINDOWS, CONVERTIBLE BAR AREA IN SIDE COCKPIT
- \* LOUNGE MODE PACKAGE - ELECTRIC MOVING SEATS AND TABLE IN FRONT DECK CONVERTIBLE FOR SUNDECK AREA
- \* AFT DINNER PACKAGE - EXTENDED AFT COCKPI AND AFT FLYBRIDGE WITH ENLARGED SOFAS AND TABLES + AFT SUNSHADE + AFT STORAGE ACCESS
- \* 4 CABINS LAYOUT
- \* SKIPPER AFT CABIN
- \* ELECTRIC RETRACTABLE FRONT WINDOW DOORS IN SALOON AND PASSAGE TO THE FRONT DECK
- \* FIXED ROOF WINDOWS ABOVE LOWER HELMSTATION
- \* SIDE SKIPER DOORS- STARBOARD
- \* LAMINATED HARDTOP ON FLYBRIDGE WITH ELECTRIC SOFT ROOF
- \* HYDRAULIC BATHPLATFORM - 700KG LIFTING CAPACITY
- \* HUMPHREE INTERCEPTORS TRIMTABS WITH AUTOTRIM AND AUTOLIST CONTROL
- \* GYRO STABILIZER (1XSEAKEEPER 9)
- \* WATER HEATER (80L)
- \* FRONT WINDOWS BLOWERS
- \* BOW ANCHOR WINCH
- \* GALVANIZED ANCHOR AND CHAIN
- \* HYDRAULIC STEERING
- \* COMPLETE WASTE SYSTEM WITH TOILET ELECTRIC PUMPS
- \* AIR CONDITIONING SYSTEM (87000 BTU - CHILLED WATER) WITH HEATING INVERTER
- \* AIR CONDITIONING SYSTEM FOR SKIPPER CABIN ONLY WITH SKIPPER AFT CABIN
- \* GENERATOR 29KW
- \* BOWTHRUSTER WITH JOYSTICK
- \* STERN THRUSTER WITH IP PROTECTION AND JOYSTICK

## INTERIOR OPTIONS

- \* REFRIGERATOR WITH FREEZER IN GALLEY
- \* WINE COOLER
- \* LARGE REFRIGERATOR IN AFT SALOON (270L)
- \* LED CEILING LIGHTS ON WHOLE BOAT
- \* LEATHER UPHOLSTERY IN SALOON
- \* CARPETS ON WOODEN FLOOR IN SALOON
- \* WOODEN FLOOR IN SALOON
- \* WOODEN FLOOR IN GALEY
- \* DECORATIVE BED COVERS AND PILLOWS
- \* DISH WASHER IN GALLEY
- \* EXCLUSIVE BATHROOM MOSAIC (EACH)
- \* ALUMINIUM SHUTTERS IN CABINS
- \* BLACK MANUAL PLISSE IN SALOON
- \* AMBIENT LED LIGHTNING IN MASTER

## EXTERIOR OPTIONS

- \* ICE MAKER IN FLYBRIDGE MINIBAR
- \* REFRIGERATOR ON FLYBRIDGE (85L)
- \* ELECTRIC GRILL IN FLYBRIDGE MINIBAR (230V)
- \* PERMATEEK ON BATHPLATFORM
- \* PERMATEEK ON COCKPIT DECK AND BALCONIES
- \* PERMATEEK STEPS TO FLYBRIDGE/SKYDECK
- \* PERMATEEK ON LOWER SIDE DECKS
- \* SHOWER ON BATHPLATFORM

- \* LED LIGHTS (COCKPIT, BATHPLATFORM)
- \* LED LIGHTS (FLYBRIDGE, SIDEDECKS)
- \* SUN DECK ON BOW DECK
- \* FRONT WINDOWS WASHING SYSTEM
- \* FIBERGLASS COCKPIT AND FLYBRIDGE TABLES
- \* HYDRAULIC PASARELLE BOX SYSTEM
- \* COVER FOR FLYBRIDGE STEERING CONSOLE
- \* COVERS FOR FRONT WINDOW AND SIDE WINDOWS
- \* ANTIFOULING (BLACK)
- \* SALTWATER ANODES
- \* ELECTRONIC EQUIPMENT
- \* RAYMARINE CHARTPLOTTER/FF 1X AXIOM 12+ RV-EU, 1X AXIOM 12+ WITH TRANSDUCER B744V AND MAGNUM OPEN ARRAY 4KW 48"
- \* RAYMARINE VHF RAY91 AIS (RECEIVER) AND VHF ANTENNA WITH REPATER ON FLY
- \* ANCHOR CHAIN COUNTER
- \* FOOT ANCHOR SWITCHES
- \* BATTERY CHARGER
- \* RUDDER INDICATOR
- \* "FUSION RADIO IN SALOON (USB) (2 SPEAKERS) AND RADIO ON FLY (2 SPEAKERS) (FLY AND SKYDECK VERSION)"
- \* "UPGRADED FUSION SOUND SYSTEM APOLLO AND AMPLIFIER (4/2/2 SPEAKERS IN SALOON/COCKPIT/FLYBRIDGE)"
- \* AUDIO SYSTEM FUSION ON BOW (2 SPEAKERS)
- \* ELECTRIC SLIDING TV LED HD 50" IN AFT SALOON FACING COCKPIT AREA
- \* TV LED 32" IN ANY CABIN

#### **ADDITIONALS**

- \* SOFA ON STARBOARD SIDE INSTEAD OF BAR COUNTERTOP AND BAR STOOLS
- \* BIDET HAND SHOWER (ALL BATHROOMS - 3 PIECES)
- \* TOILET WITH BIDET (2IN1 - INTEGRATED)
- \* BUNK BEDS IN TWIN CABINS (2 PIECES)
- \* GALLEY AND SALOON CABINET ILLUMINATION
- \* SALOON TABLE - PLAIN
- \* IN COCKPIT SIDE PILLARS IN STD BLACK PAINT
- \* DRAWER FRIDGE IN COCKPIT SMALL SOFA
- \* UNDER WATER LIGHTS
- \* COVERS
- \* WASHER/DRYER
- \* AUTOPILOT
- \* AIS
- \* BIGGER SALOON TV 50 inch
- \* WATER MAKER
- \* CAMERA
- \* NUGGER SHORE CABLES WITH ADAPTERS 64/32 amp
- \* SAFE
- \* EXTRA AXIOM RAYMARINE 12+ ON MAIN STATION



















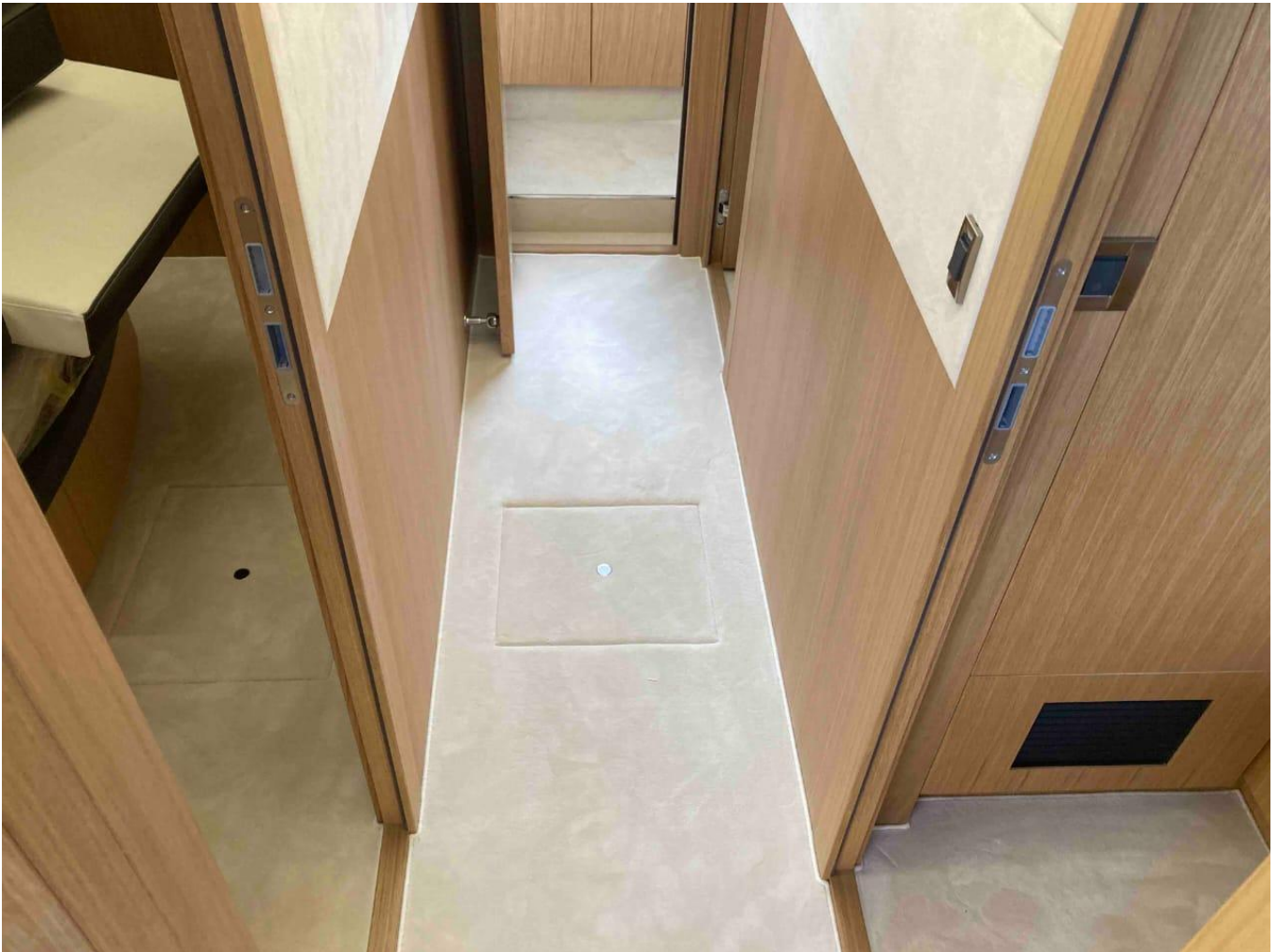


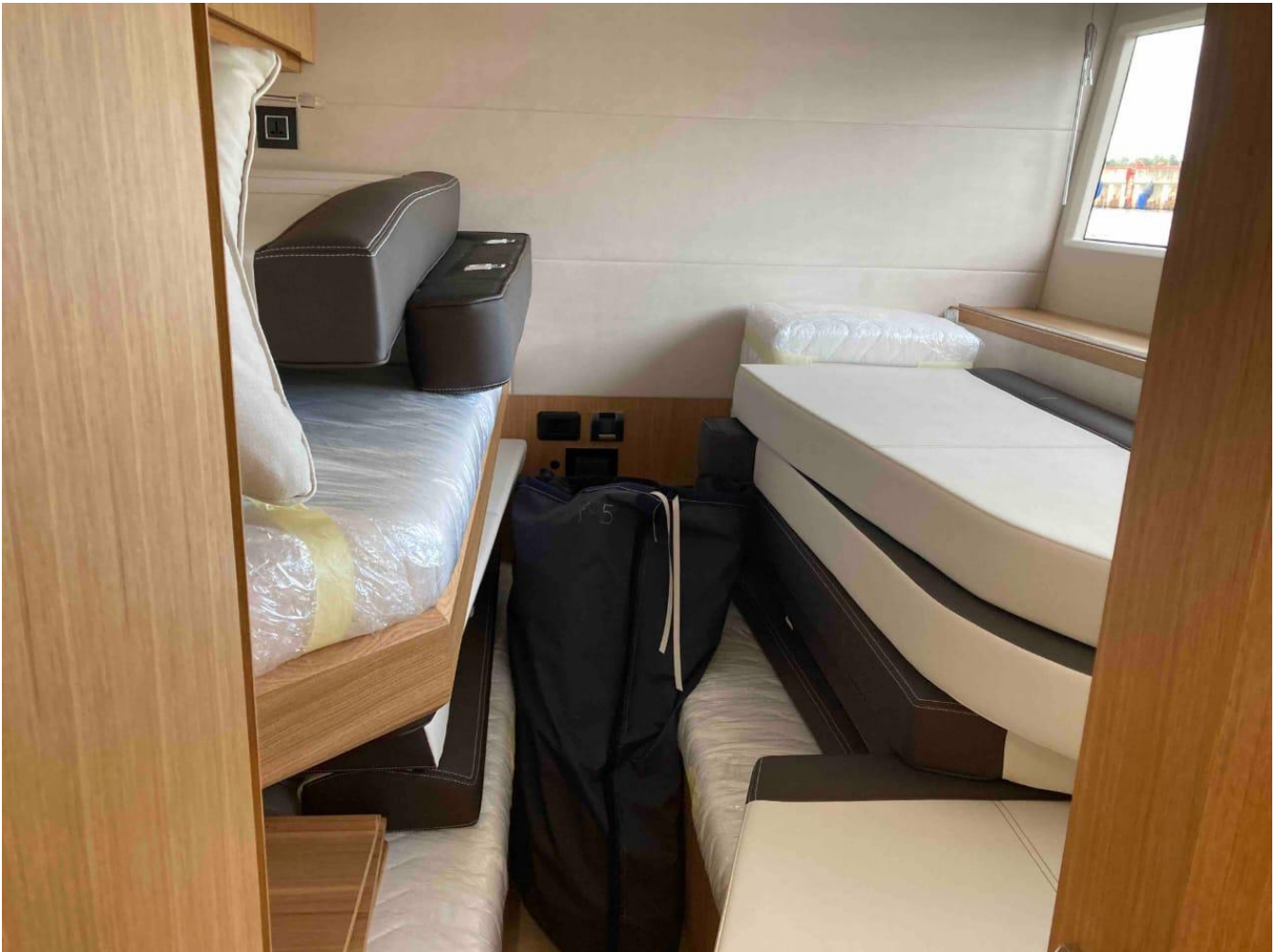












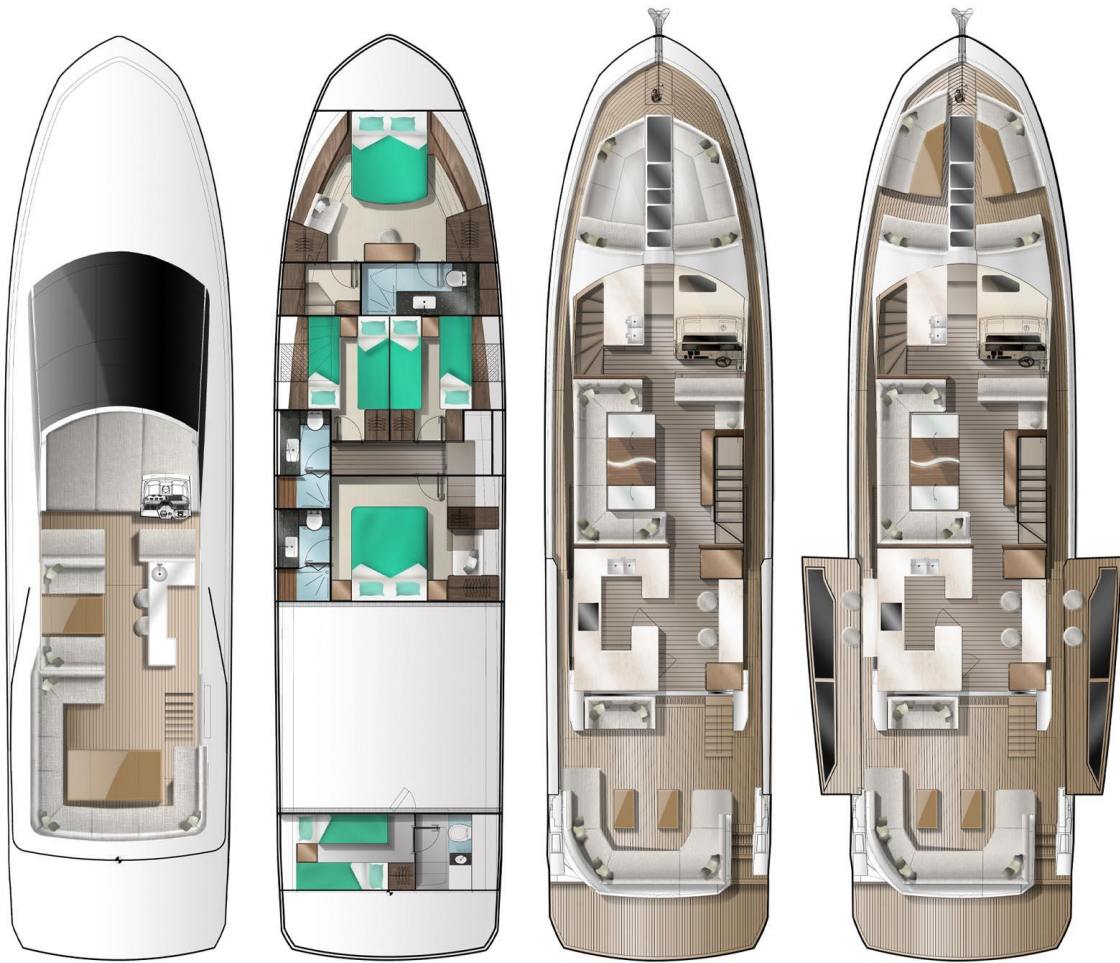








# LAYOUTS



*This document is not contractual. The Company is not responsible for the accuracy of information provided by the yacht owner (images, technical specification, list of installed equipment, engine hours, questions of legal registration). Any information provided by the Company on their website, brochure and any other related documentation is provided in good faith and offered for information purposes only. The exact parameters and characteristics could be provided on request, as well as indicated in the Sales Contract.*