



GALEON 500 FLY

PRICE: 1.359.000 € / VAT excl.

			
16,20 m	4,42 m	85 h	1800 L

OVERVIEW

Yacht type	Motor Yacht
Builder	GALEON
Year	2024

DIMENSIONS

Length	16,20 m
Beam	4,42 m
Fuel/ Water	1800 l / 650 l

MAIN MACHINERY

Engines	2xVolvo Penta D8-600
Engine Hours	85 h

ACCOMODATION

Guests	12
Cabins	3 + 1
Toilets	2 + 1

EQUIPMENT:

- OAK - MATT PAINT

MAIN EQUIPMENT

- BEACH MODE PACKAGE - FOLDABLE AFT BALCONIES AND SLIDING OPENABLE AFT SIDE WINDOWS, CONVERTIBLE BAR AREA IN SIDE COCKPIT
- DINNER MODE PACKAGE - ELECTRIC MOVING SEATS AND TABLE IN FRONT DECK CONVERTIBLE FOR SUNDECK AREA
- SKIPPER AFT CABIN
- EXTENDED BATHPLATFORM (1200mm)
- HYDRAULIC BATHPLATFORM - 500KG LIFTING CAPACITY
- LAMINATED HARDTOP ON FLYBRIDGE WITH ELECTRIC SOFT ROOF
- COCKPIT SOFA WITH AFT ENTRANCE TO STORAGE AREA
- FIXED SOFA WITH SUN DECK ON BOW DECK
- TRIM TABS INSTALLATION WITH INDICATORS
- HYDRAULIC STEERING
- COMPLETE WASTE SYSTEM WITH ELECTRIC PUMPS
- THREE SEGMENT SLIDING ENTRANCE DOORS
- PANORAMIC SIDE WINDOW (STARBOARD SIDE) ELECTRICALLY DRIVEN UP/DOWN
- WATER HEATER (60L)
- FRONT WINDOWS DEFROSTER
- BOW ANCHOR WINCH
- GALVANIZED ANCHOR AND CHAIN
- AIR CONDITIONING SYSTEM (49000 BTU - CHILLED WATER) WITH HEATING INVERTER
- AIR CONDITIONING SYSTEM FOR SKIPPER CABIN
- GENERATOR FISCHER PANDA 15000x(constants rpm model)
- BOWTHRUSTER WITH JOYSTICK

INTERIOR OPTIONS

- OVEN COMBO (GRILL+ MICROWAVE FUNCTION)
- REFRIGERATOR IN GALLEY (130L)
- SHOWER IN BATHROOM
- EXCLUSIVE BATHROOM MOSAIC (EACH)
- ALUMINIUM SHUTTERS IN CABINS
- BLACK MANUAL PLISSE IN SALOON
- ENTRANCE DOOR CURTAIN
- ARTIFICIAL WOOD FLOOR IN GALLEY
- LED CEILING LIGHTS ON WHOLE BOAT
- EXCLUSIVE ENLIGHTED BEDHEAD IN MASTER CABIN
- SKYLIGHTS IN MASTER TOILET AND SIDE CABIN
- DISH WASHER IN GALLEY
- WASHER IN MASTER CABIN
-

EXTERIOR OPTIONS

- REFRIGERATOR ON FLYBRIDGE (49L)
- FIBERGLASS FOLDABLE TABLE ON FLYBRIDGE
- PERMATEEK ON BATHPLATFORM
- PERMATEEK ON COCKPIT DECK AND BALCONIES
- PERMATEEK STEPS TO FLYBRIDGE

- SHOWER ON BATHPLATFORM
- FIBERGLASS LOWERABLE TABLE IN AFT COCKPIT
- LED LIGHTS (COCPKIT, STEPS, FLYBRIDGE)
- HYDRAULIC PASARELLE (BOX SYSTEM)
- COLOR WRAPPED HULL
- FRONT WINDOWS WASHING SYSTEM
- COVERS FOR FRONT WINDOW AND SIDE WINDOWS
- ANTIFOULING (BLACK)

ELECTRONIC EQUIPMENT

- RAYMARINE CHARTPLOTTER/FF 2X AXIOM 12+ RV-EU WITH TRANSDUCER B744V AND DIGITAL RADAR RD424 HD
- RAYMARINE VHF RAY91 AIS (RECEIVER) AND VHF ANTENNA WITH REPATER ON FLY
- BATTERY CHARGER
- RUDDER INDICATOR
- FUSION UNIVERSAL DOCK FOR SMARTPHONE (WIRELESS PHONE CHARGER)
- UPGRADED FUSION SOUND SYSTEM APOLLO AND AMPLIFIER
- (4/2/2 SPEAKERS IN SALOON/COCKPIT/FLYBRIDGE)
- ELECTRIC SLIDING TV LED 32" IN SALOON
- BIDET HOSE FOR 2 HEADS

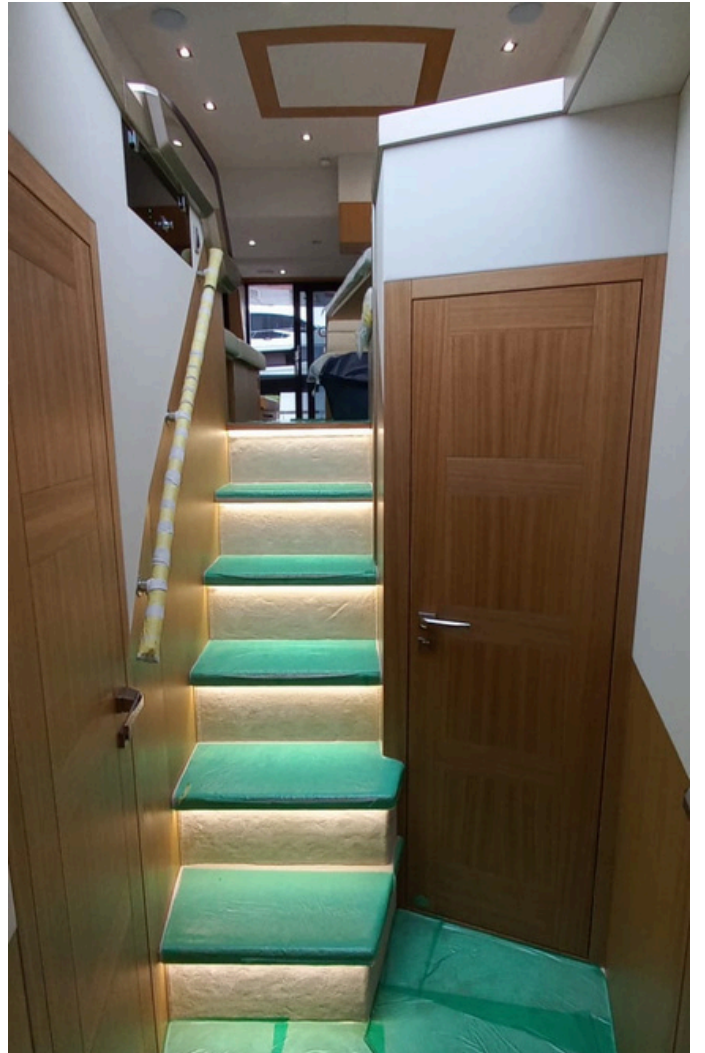




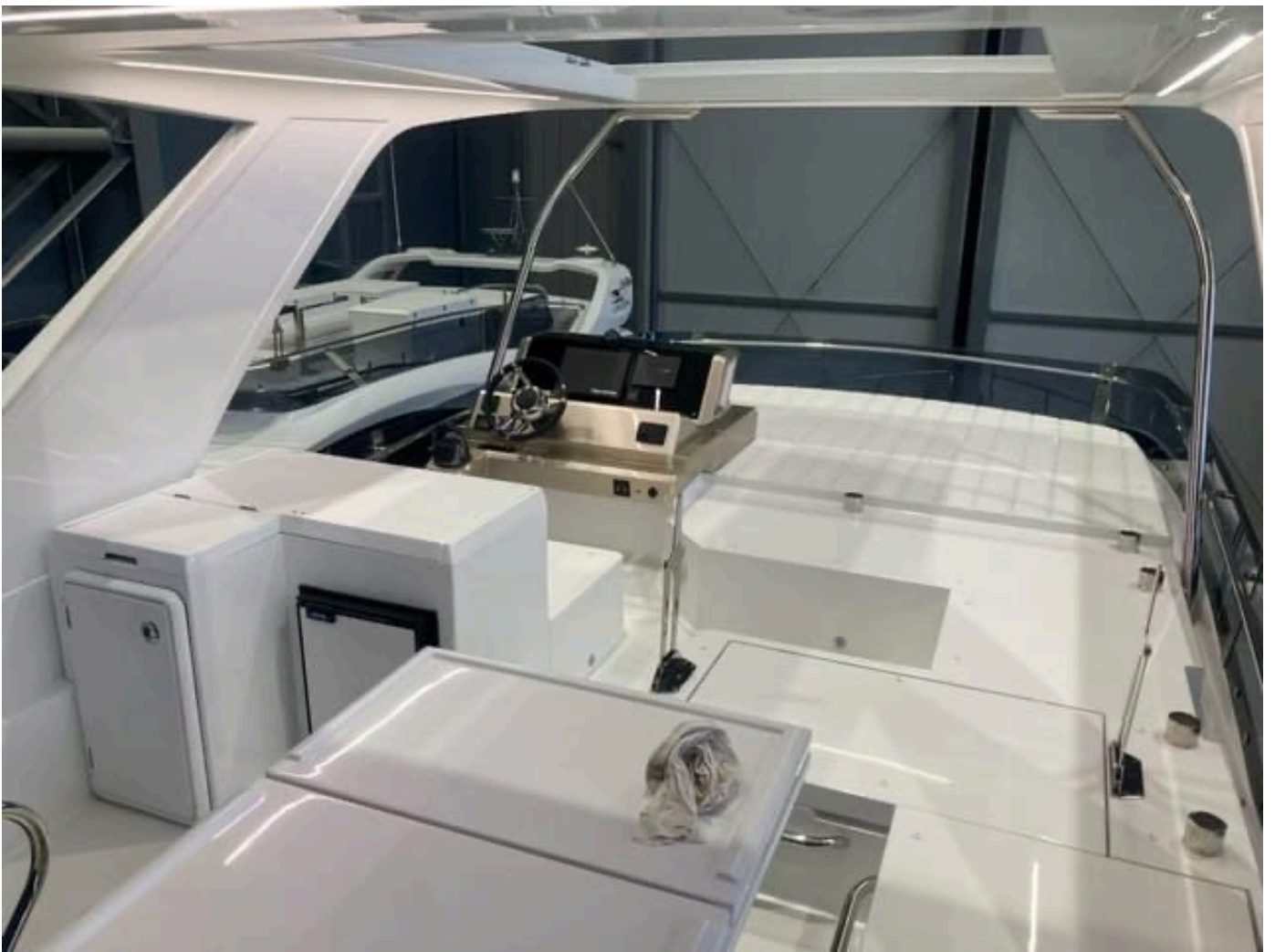


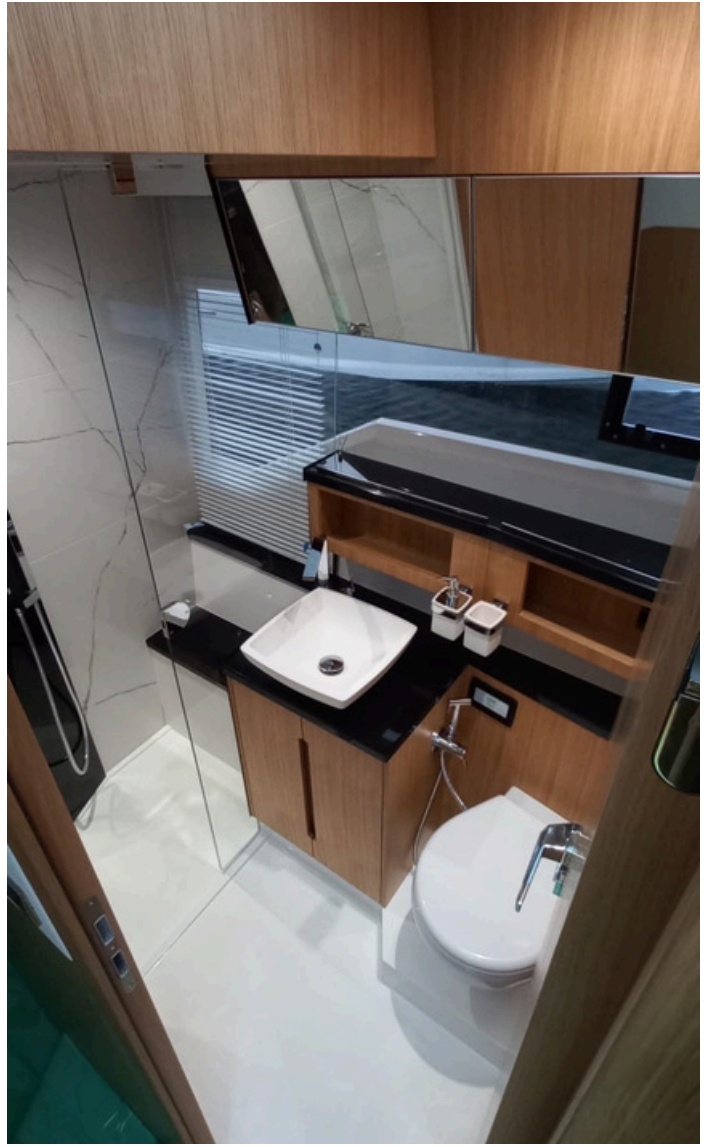












LAYOUTS



This document is not contractual. The Company is not responsible for the accuracy of information provided by the yacht owner (images, technical specification, list of installed equipment, engine hours, questions of legal registration). Any information provided by the Company on their website, brochure and any other related documentation is provided in good faith and offered for information purposes only. The exact parameters and characteristics could be provided on request, as well as indicated in the Sales Contract.